



## EAGLE P60 AS&E

HIGH-ENERGY, DRIVE-THROUGH CARGO  
& VEHICLE INSPECTION SYSTEM

- RELIABLE 6 MEV X-RAY IMAGING SYSTEM
- THROUGHPUT OF UP TO 80 VEHICLES PER HOUR
- THREE-COLOR MATERIAL DISCRIMINATION ASSISTS IN THE CLASSIFICATION OF MATERIALS

Its high penetration and resolution deliver detailed images of dense and cluttered cargo for deep insight into the contents, increasing the efficiency of scanning operations.

The cab of a truck offers a multitude of concealment options for smugglers of currency, drugs, weapons, and people. Our patented CabScan® technology safely scans the truck cab with low energy and automatically switches to a higher energy to screen the cargo container.

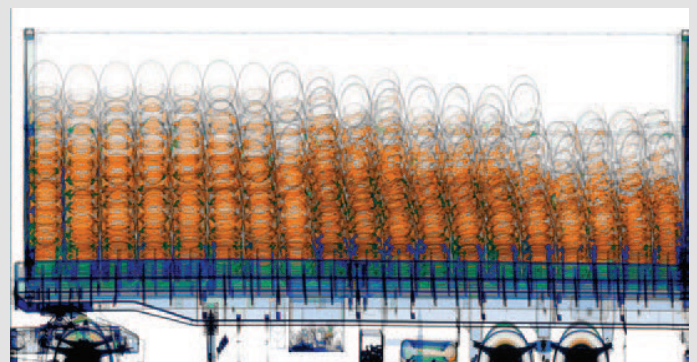
The Eagle P60 was developed with a small system footprint so customers can deploy the high-energy, drive-through system into existing traffic lanes, with minimal interruption to the site layout. The small form factor increases the long-term success and throughput of scanning operations.

### HEALTH AND SAFETY

- **Shielded radiation exclusion zone (80 trucks per hour)**  
50 m x 12 m
- **Radiation dose at exclusion zone boundary**  
0.5  $\mu$ Sv in any one hour
- **Radiation dose to driver**  
Less than 0.25  $\mu$ Sv per scan
- **Radiation dose to crew**  
0.5  $\mu$ Sv in any one hour
- **Radiation dose to cargo**  
Less than 20  $\mu$ Sv per scan



THE RAPISCAN EAGLE® P60 INSPECTION SYSTEM IS IDEALLY SUITED FOR HELPING CUSTOMERS FIGHT TRADE FRAUD AND DRUG SMUGGLING, AS WELL AS COMBATING TERRORISM.



Rapiscan Eagle P60 transmission X-ray image with material discrimination



# EAGLE P60

## AS&E

### TYPICAL PERFORMANCE

	P60-S	P60-R
Steel penetration	330 mm	320 mm
Wire resolution	1.2 mm	1 mm
Spatial resolution	5 mm (H) 4 mm (V)	4mm (H) 3 mm (V)

### OPERATING FEATURES

X-ray source	6 MeV
Crew	Scan coordinator and image analyst
Scan modes	Automatic cab exclusion and optional CabScan
Scan direction	Single or optional bi-directional
Scanning speed	3-8 km/hr
System throughput	Up to 80 trucks per hour
Power requirements	50 Hz: 400 V, 63 A, 44 kVA
	60 Hz: 400 V, 63 A, 44 kVA

### SYSTEM DIMENSIONS AND SPECIFICATIONS

Overall dimensions	
Width	8.4 m
Height	5.7 m
Depth	3.4 m

### MAXIMUM VEHICLE DIMENSIONS

Width	2.8 m
Height	4.6 m

### ENVIRONMENT

Operating temperature	-20° C to 40° C
-----------------------	-----------------

### SYSTEM OPTIONS

- **CabScan® mode** : safely scans the cab of the truck, from front bumper to start of cargo
- **Bi-directional scan mode** : allows operator to easily switch the direction of traffic flow
- **Integrated peripheral devices** : license/number plate recognition system, container code recognition system, and manifest scanner
- **Integrated radiation detection** : gamma or gamma/neutron
- **Extreme cold weather package** : extends the system operating temperature to -40° C
- **Extreme hot weather package** : extends the system operating temperature to +55° C

### HTDS

Parc d'Activités du Moulin de Massy - 3 rue du Saule Trapu  
BP246 - 91882 Massy Cedex France

Tel : +33 (0) 1 64 86 28 28 - Fax : +33 (0) 1 69 07 69 54 - info@htds.fr - www.htds.fr

HTDS Algeria: +213 232 384 01/02

HTDS Morocco: +212 222 749 59

HTDS Egypt: +202 229 053 06

HTDS Lybia: +218 91 69 50 70 8

HTDS Madagascar: +261 34 40 664 72

HTDS Tunisia: +216 70 836 961