



## EAGLE T60 AS&E

HIGH-ENERGY, TRAILER-MOUNTED  
INSPECTION SYSTEM

- HIGH-ENERGY INSPECTION SYSTEM ON TRAILER PLATFORM ALLOWS FOR EFFICIENT SCREENING OF VEHICLES
- HIGH-THROUGHPUT SCREENING OF UP TO 80 TRUCKS PER HOUR
- DEPLOYED IN MINUTES FOR FAST RESPONSE TO CHANGING OPERATIONAL REQUIREMENTS

The fully self-contained unit can be easily towed and rapidly deployed, and operates in portal mode with automatic cab exclusion or optional CabScan® mode to image the entire vehicle. Vehicles are scanned as they drive through the tunnel at 3-8 km/hr (1-5 mph) and the on-board inspection office can house up to four inspectors to facilitate high-throughput operation.

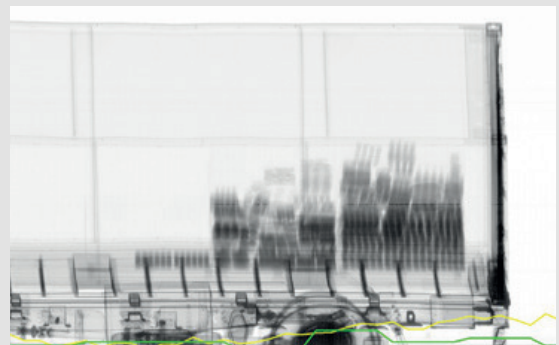
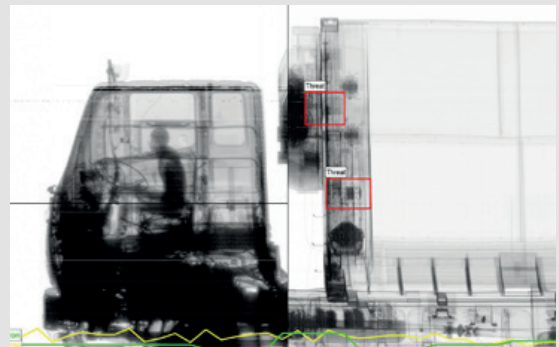
The Eagle T60 scans vehicles up to 5 meters in height and 2.8 meters in width without corner cutoff. The system is built on a commercially available, heavy-duty, solid-frame trailer chassis with 2 rear axles and a standard fifth wheel for rapid and safe connection to standard tractor units capable of towing a load of at least 25 metric tons.

### HEALTH AND SAFETY

- **Open radiation exclusion zone (80 trucks per hour)**  
50 m x 40 m
- **Radiation dose at exclusion zone boundary**  
0.5  $\mu$ Sv in any one hour
- **Radiation dose to driver**  
Less than 0.25  $\mu$ Sv per scan
- **Radiation dose to crew**  
0.5  $\mu$ Sv in any one hour
- **Radiation dose to cargo**  
Less than 20  $\mu$ Sv per scan



THE RAPISCAN EAGLE® T60 IS A TRAILER-MOUNTED, DRIVE-THROUGH, HIGH-ENERGY INSPECTION SYSTEM WITH MATERIAL DISCRIMINATION FOR EFFICIENT SCREENING OF VEHICLES FOR THREATS AND CONTRABAND.



Rapiscan Eagle T60 high-energy X-ray image with optional CabScan mode and integrated radiation detection



## EAGLE T60 AS&E

### TYPICAL PERFORMANCE

Steel penetration	320 mm
Wire resolution	1.2 mm

### OPERATING FEATURES

X-ray source	6 MeV
Crew	Up to 4 analyst stations and optional ground guide
Scan modes	Portal drive-through mode only; start of cargo to rear bumper or CabScan mode
Scan direction	One direction from rear
Scanning speed	3-8 km/hr
System throughput	Up to 80 trucks per hour
Set-up time	20 min in standard operating environment
Shore power requirements (option)	50 Hz: 400 V, 63 A, 44 kVA 60 Hz: 220 V, 125 A, 48 kVA

### STOWED DIMENSIONS

Length	12.7 m
Width	2.6 m
Height	3.7 m

### DEPLOYED DIMENSIONS

Length	12.7 m
Width	7.1 m
Height	5.8 m

### MAXIMUM SCANNED OBJECT DIMENSIONS

Width	2.8 m
Height	5 m
Minimum scan height	0.4 m from ground

### ENVIRONMENT

Operating temperature	-10° C to 40° C
Maximum wind speed	40 km/h



### SYSTEM OPTIONS

- **CabScan mode** : while in portal mode, safely scans the cab of the truck from front bumper to start of cargo
- **Integrated radiation detection** : gamma or gamma/neutron
- **Integrated peripheral devices** : license/number plate recognition system, container code recognition system, and manifest scanner
- **Extreme cold weather package** : extends the system operating temperature to -40° C
- **Extreme hot weather package** : extends the system operating temperature to +55° C

### HTDS

Parc d'Activités du Moulin de Massy - 3 rue du Saule Trapu  
BP246 - 91882 Massy Cedex France

Tel : +33 (0) 1 64 86 28 28 - Fax : +33 (0) 1 69 07 69 54 - info@htds.fr - www.htds.fr

HTDS Algeria: +213 232 384 01/02

HTDS Morocco: +212 222 749 59

HTDS Egypt: +202 229 053 06

HTDS Lybia: +218 91 69 50 70 8

HTDS Madagascar: +261 34 40 664 72

HTDS Tunisia: +216 70 836 961