



## INTEGRATED MULTI-GAS DETECTOR FOR UNMANNED AERIAL SYSTEM

# FLIR MUVE™ C360

The FLIR MUVE™ C360 is a multi-gas detector completely integrated with an unmanned aerial system (UAS) to provide real-time continuous monitoring of chemical hazards while on the move. The sensor block boasts 8-channels, which includes a photoionization detector (PID), Lower Explosive Limit (LEL) detector, and six other sensors. The integrated snorkel is designed to negate the effects of rotor wash, extending past the propellers to sample the unperturbed air. The MUVE C360 sensor block quickly latches to a proprietary integration dock mounted to the UAS. The FLIR calibration station features the same dock, so the operator can easily connect for routine sensor verification. Sensor readouts are prioritized based on alarm conditions and are displayed real-time on the pilot's interface in the FLIR VueLink™ app. The MUVE C360 is a time-saving, game-changer for emergency responders, industrial safety officers, and environmental monitoring experts.

[www.flir.com/MUVEc360](http://www.flir.com/MUVEc360)



### ASSESS THE SCENE FROM A SAFE DISTANCE

Before putting the health and safety of your team at risk, fly the C360 into the scene to gather initial assessment of hazards

- 8-channel sensor delivers broad hazard coverage
- Analyze air quality surrounding active scenes prior to entry
- Select proper PPE before entering scene
- Locate leak source and track incident progression



### SIGNIFICANTLY REDUCE THE TIME TO ACTION

Deploy the C360 on scene in the time it takes the average responder to suit up

- Cover difficult terrain from the air to assess hazards
- Quickly draw a perimeter to assess and map hazards
- Preset alarm thresholds to make quicker decisions on-scene
- Understand the flow of hazardous vapors at the source, but also in the air



### FULLY INTEGRATED SITUATIONAL AWARENESS

Get a comprehensive overview of an active scene including visuals and chemical identification

- FLIR VueLink App provides plug-and-play control of the C360, flight operations, and other on-board sensors
- Analyze, log, and access complex data in an easy-to-understand visual overlay
- Install with click-in simplicity via onboard integration dock

## SPECIFICATIONS

### Sensor Block Technology

Sensors	CO, Cl <sub>2</sub> , O <sub>2</sub> , NO <sub>2</sub> , H <sub>2</sub> S, SO <sub>2</sub> , LEL
PID	VOC 10.6 eV (ppm)
FLIR Calibration Station	Proprietary automatic calibration design, includes tubing and power adaptor

### Sampling & Analysis

Sample Introduction	Actively pumped via integrated snorkel
Sampling Rate	300 ml/min minimum
Sampling & Analysis	Real-time detection

### System Interface

Display & Alerts	FLIR VueLink™ application integrated via tablet connected to the UAS remote controller
Communication	Remote controller via USB-A accessory (tablet); UAS power port and serial (C360)
Wireless Range	Determined by the UAS range
Data Storage	Sensor data and flight information logged on tablet
Training Requirements	<30 mins for operator; 4 hours for advanced user

### Power

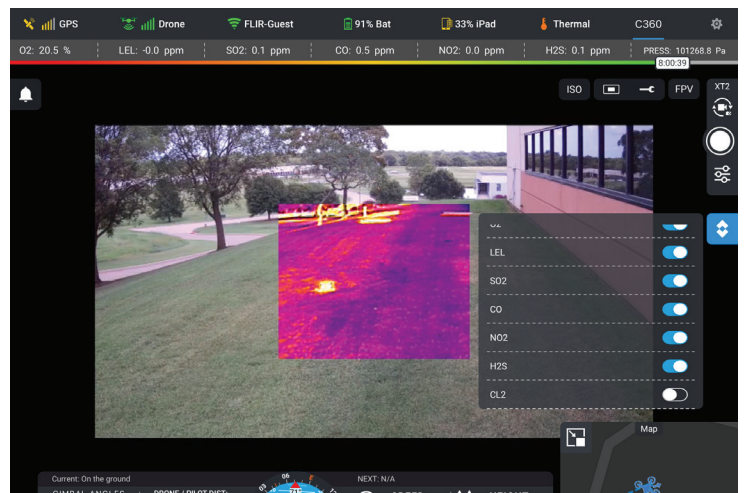
Input Voltage	24V DJI Matrice 210; 12V FLIR Calibration Station
Battery Specification	Powered by the UAS
Cold Start Time	90 seconds from cold start

### Environmental

Operating Temp	-4 to 122 °F (-20 to 50 °C)
Operating Humidity	10 to 93%, non-condensing
Storage Temp	-22 to 158 °F (-30 to 70 °C)
Protection	IP43-rated

### Physical Features

Dimensions (L x W x H)	6.5 x 2.3 x 2.0" (16.51 x 5.84 x 5.08 cm) - C360 only
Total Payload Weight	1.5 lb (680.39 g) - C360 with dock and snorkel
Compatibility	Currently compatible with DJI Matrice 210, V1 and V2, UAS
Integration Dock	Proprietary quick-connect mount for UAS and FLIR Calibration Station



Specifications are subject to change without notice.  
For the most up-to-date specs, go to [www.flir.com](http://www.flir.com)

#### HEADQUARTERS

FLIR Systems, Inc.  
27700 SW Parkway Ave  
Wilsonville, OR 97070

#### DETECTION SALES, AMERICAS

FLIR Systems, Inc.  
1201 S. Joyce Street  
Suite C006  
Arlington, VA 22202 US  
PH: +1-877-692-2120

#### DETECTION SALES, APAC

FLIR Detection, Inc.  
10 Kallang Avenue #09-10  
Aperia Tower 2  
Singapore 335910  
PH: +65-6822-1596

#### DETECTION SALES, EMEA

FLIR Detection, Inc.  
Luxemburgstraat 2  
2321 Meer  
Belgium  
PH: +32 (0) 3665 5106

[detection@flir.com](mailto:detection@flir.com)

[www.flir.com](http://www.flir.com)  
NASDAQ: FLIR

Equipment described herein is subject to US export regulations and may require a license prior to export. Diversion contrary to US law is prohibited. Imagery for illustration purposes only. Specifications are subject to change without notice. ©2019 FLIR Systems, Inc. All rights reserved. Revised 09/18/19

19-1738



The World's Sixth Sense®