

## TECHNICAL INFORMATION

### Scansilc X-ray Imagers

MODEL	SCANSILC 2430 EOD	SCANSILC 3643 EOD
Image Area	24 X 30 cm	36 x 43 cm
Active Image Area	233 x 300 mm	358 x 430 mm
Pixel Pitch	76 micron	140 micron
Resolution	6.5 lp/mm	3.5 lp/mm
Physical Dimensions	327 x 362 x 21.5 mm	412 x 466 x 21.5 mm
Weight	2.8 kgs	4.5 kgs
Environmental Protection	IP67 (Dust and Water Resistance)	IP67 (Dust and Water Resistance)
Drop Tested	Over 1m	Over 1m

### Golden X-ray Generators

MODEL	XR150	XR200	XRS-3
Applications	Special Forces, Light Duty Applications	Police, General Security, Postal Investigation	Military, Counter IED, UXO Inspection,
Penetration	Minimum 15mm steel	Minimum 15mm steel	Minimum 26 mm steel
Dimensions	23.06 (l) x 7.7 (w) x 10.34 (h) cm	27.15 (l) x 10.82 (w) x 14.81 (h) cm	36.07 (l) x 10.87(w) x 14.81 (h) cm
Weight	2.13 kgs with battery	4.8 kgs with battery	5.3 kgs with battery

### Scanview Software

- X-ray Generator selection
- X-ray pulse setting
- X-ray pulse Activation
- X-ray Firing Delay
- Password Controlled Safety Timeout
- Accumulation of Pulses (Summing)
- Audible and Visual Warning during X-ray activation
- Incident Reference Creation
- Visual database of X-ray images including name, date, category, place, file name
- Ability to back up database
- Query and Sort in database
- Compact Database
- Digital Zoom
- Vocal annotation
- Email option
- Battery Monitor
- User login
- Print
- Fax
- On-Screen Help
- Multiple Zoom including zoom thumbnail window
- Zoom to region of interest
- Inverse (polarity) image
- Pseudo Colour Images
- Sub-image
- Rotate, Flip and Mirror image
- 3D (Emboss) Image
- Sharpening
- Smoothing
- Edge Enhancement, Find Edges
- Clean
- Brightness and Contrast
- Gamma Correction/Stretch
- Import/Export Images
- Shaped Regions
- Select Region
- Annotate Images, Save Annotations
- Histogram Equalisation
- Histocontrast
- Overlay
- Copy/paste
- Multiple Undo, Image Restore
- Measure (multiple units)
- Calibrate measurements
- Summing
- Image Stitching and Cropping
- Grid Overlay
- Save to windows formats - jpg, bmp, tif
- Foreign language options

## WITHOUT COMPROMISE

- ✓ High Detail X-ray systems for a range of security and defence applications
- ✓ Ruggedised IP67 protected x-ray panels that we've drop and water tested for your operational reliability
- ✓ Lightweight x-ray systems minimised to only 3 components for fast grab and go operation
- ✓ Control and fire your x-ray system safely from tablet or laptop using cable or wifi without any additional bulky interface components.
- ✓ Take x-rays using only 1 pulse for increased operator safety



[www.scanna-msc.com](http://www.scanna-msc.com)

SCANNA MSC Ltd,  
223 Regent Street, London, W1B 2EB

Telephone: +44(0) 207 355 3555  
Fax: +44(0) 207 355 3556  
Email: [info@scanna-msc.com](mailto:info@scanna-msc.com)



## RUGGEDISED SLIM PANEL X-RAY SYSTEMS

FROM VIP TO EOD - SCANSILC HAS IT COVERED

[www.scanna-msc.com](http://www.scanna-msc.com)





Scansilc EOD is new and unique ruggedised lightweight x-ray system developed for a range of security field applications including suspect package investigation, Bomb Disposal, EOD, baggage checks, searching for firearms or contraband material and counter-surveillance.

## SCANSILC EOD IMAGERS



**SCANSILC 2430 EOD**



**SCANSILC 3643 EOD**

Scanna's Scansilc EOD Imagers are only 2.15 cm thick and are available in 2 sizes – compact 24 x 30 cm and larger area 36 x 43 cm. Unlike other most other x-ray systems that come from the medical field, Scansilc panels are specially designed to be high shock and impact tolerant with dust and water resistance to IP67 and a load bearing weight of 170 kgs. There are no moving parts or scanning mechanisms inside the panels.

The panels themselves incorporate unique intelligent processing and communications technology (that competitors build into a separate interface box), their unique Pb internal shielding provides resilience, and you get superb 8.5 hour power from each of the 2 batteries.

### HIGHLIGHTED FEATURES OF SCANSILC EOD

- Best in class imaging quality of 76 microns on the 2430 panel (140 microns on the 3643)
- Uniquely designed for security applications - not a fragile medical panel in a protective cover
- Unique control of the image panel and x-ray generator safely from the tablet/laptop without any additional bulky interface box, interface cables and connectors.
- 3 operational modes - Cable, wireless and AED (automatic exposure detection)
- Ruggedised Unibody design
- Unique IP67 environmental protection against dirt, dust and water ingress. IP68 connectors
- Drop tested to over 1m on all 4 corners
- Unique load bearing weight of 170 kgs
- Small dead zone at bottom of panel 7mm on the 2430, 8mm on the 3643

## PORTABLE X-RAY GENERATORS

Scansilc EOD operates with any of the Golden XR pulsed x-ray generators. The generators connect directly into the imaging panel without the need for an additional bulky electronic communications box.



**XR150**



**XR200**



**XRS-3**

Scansilc offers dual energy x-ray imaging - organic and inorganic material discrimination via a snap on Dual Energy module (SCANDEM)



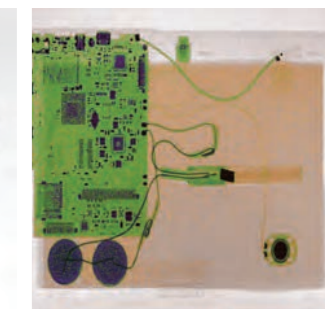
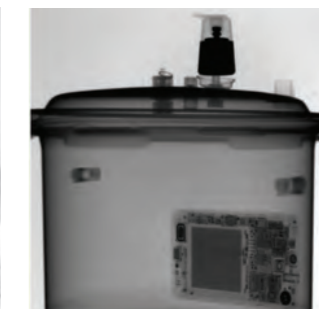
**SCANDEM**

## CONTROL UNIT OPTIONS



Select from a range of semi rugged and fully rugged Windows Tablets and Laptops to run your Scanview X-ray Imaging Software and control the Scansilc x-ray imaging system

## SCANVIEW IMAGING SOFTWARE



Scansilc is provided with Scanview - a powerful x-ray imaging software tool for setting, controlling and firing your x-ray generator remotely as well as reviewing and enhancing images, creating incidents and reports. Images are stored in raw format for chain of evidence protection but can be exported in windows formats for image sharing between users and report writing. Scansilc can also operate alongside XTK software.

## OPTIONS AND ACCESSORIES

- ✓ Wireless Image Transmission
- ✓ Wireless X-ray Trigger (ScanTrig)
- ✓ 25/50/100/150 m Cables
- ✓ Cable Reels and handspools
- ✓ Backpackable Systems
- ✓ Foreign Language Software
- ✓ ROV Robot Integration
- ✓ Imager and Generator Tripod Mounts
- ✓ External Camera